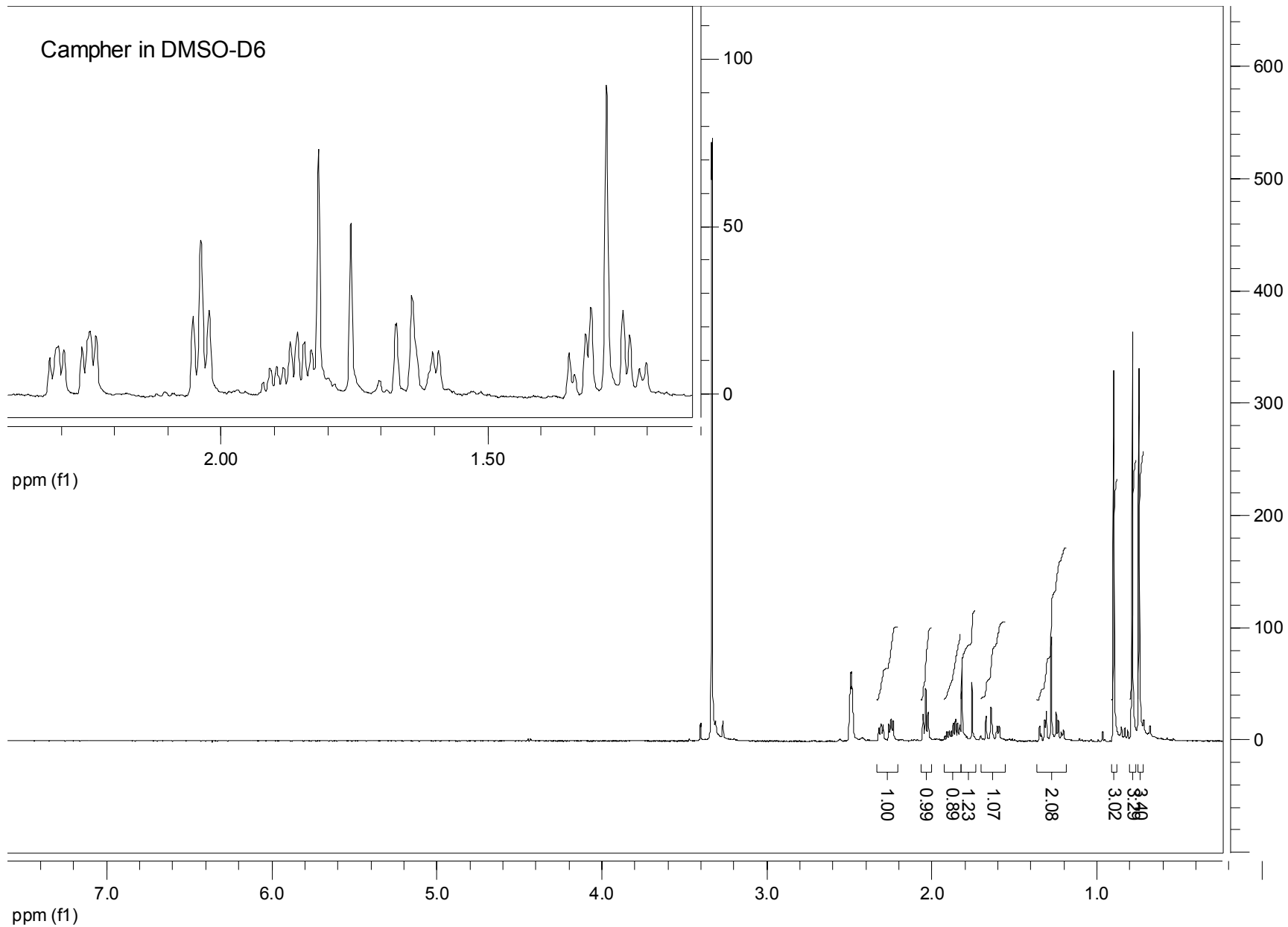
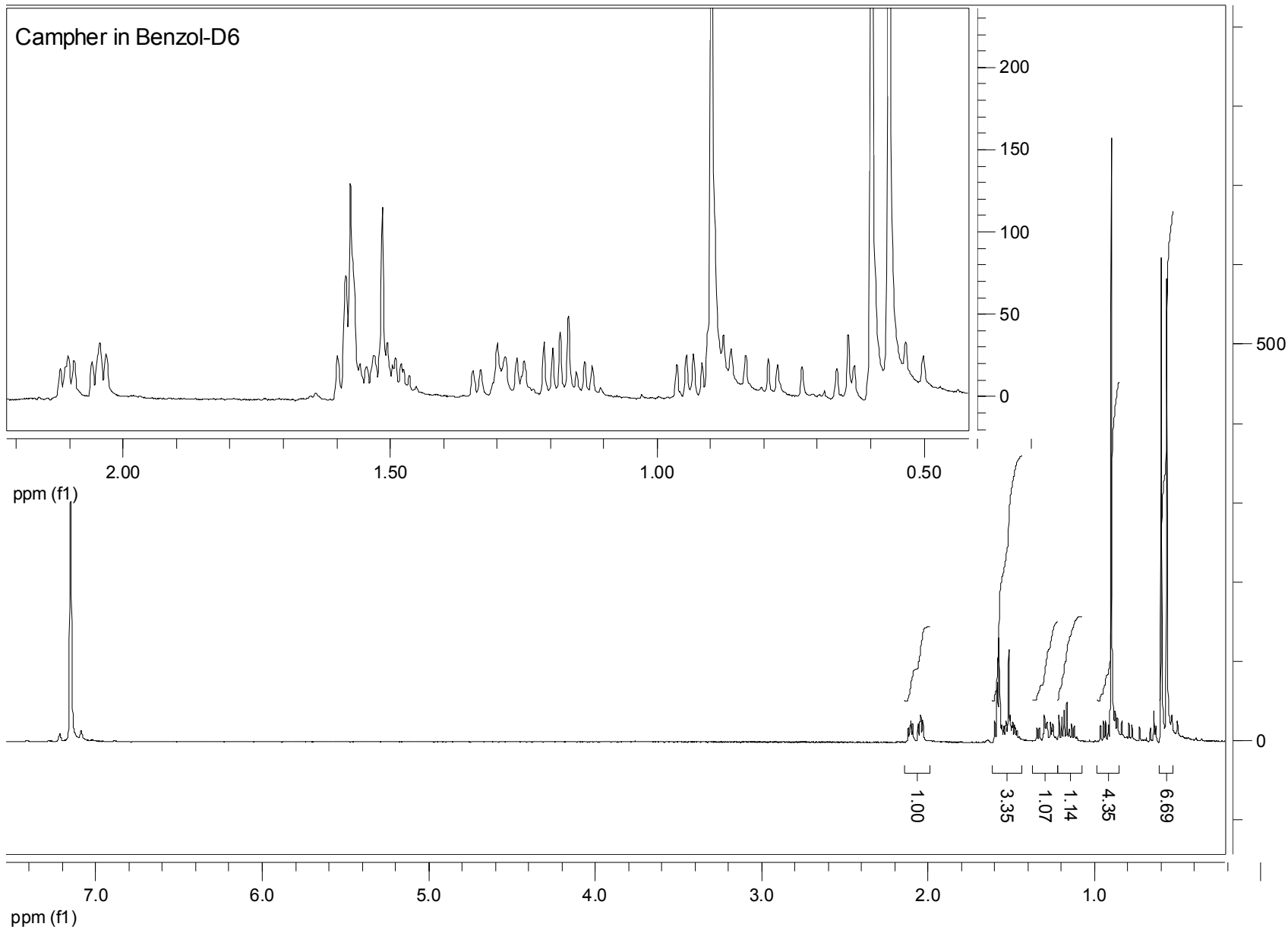


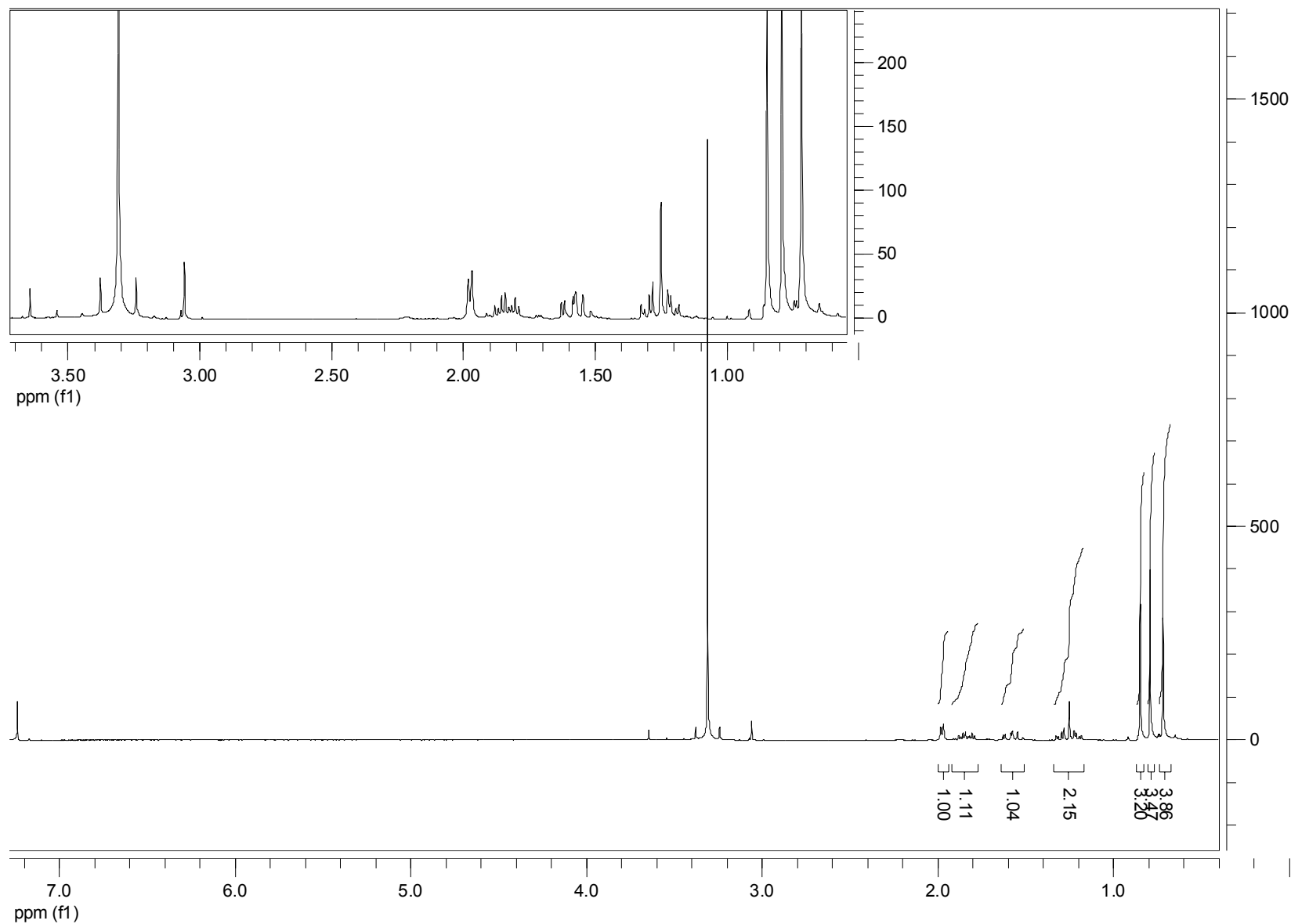
Campher in DMSO-D6

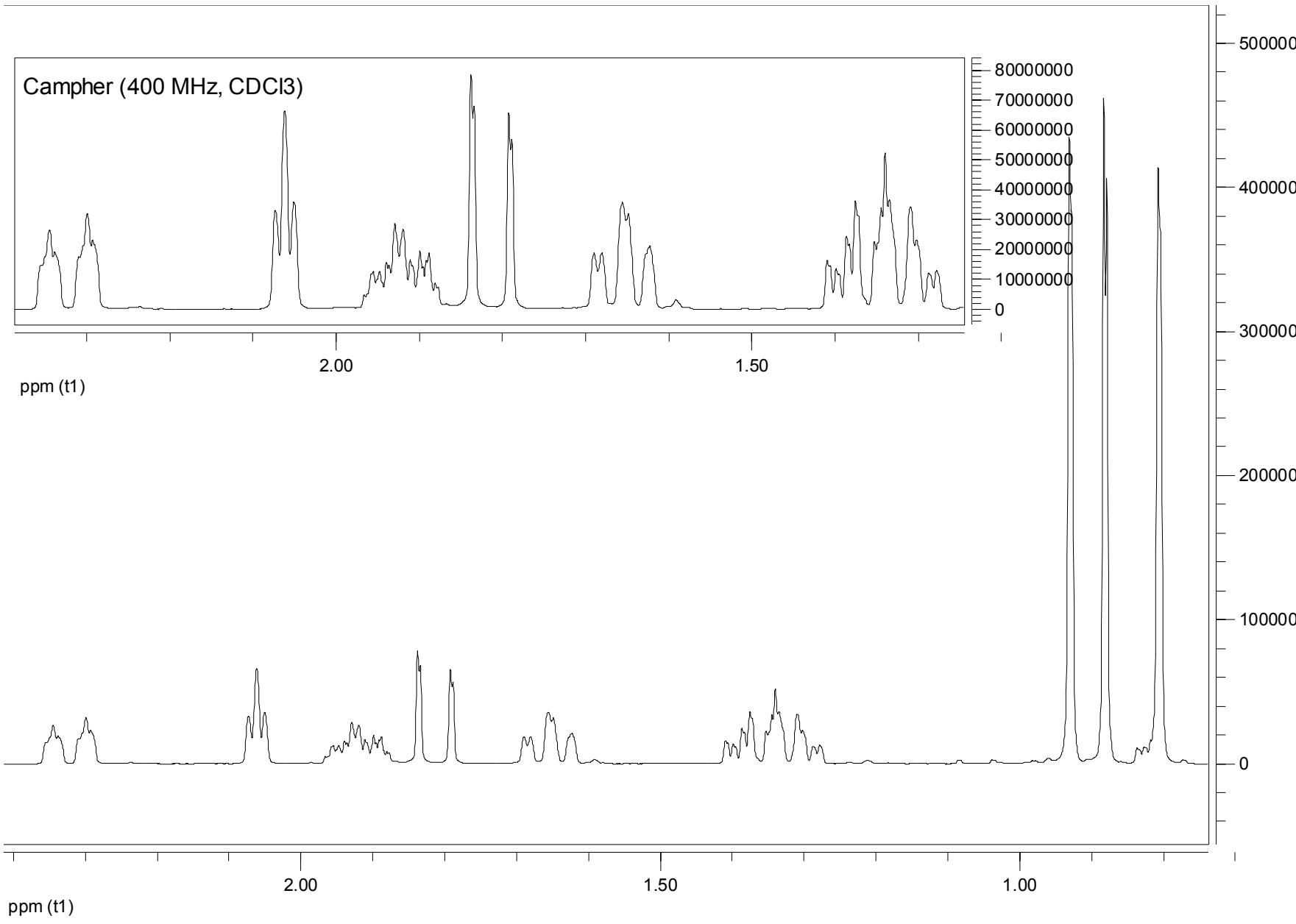


Campher in Benzol-D6

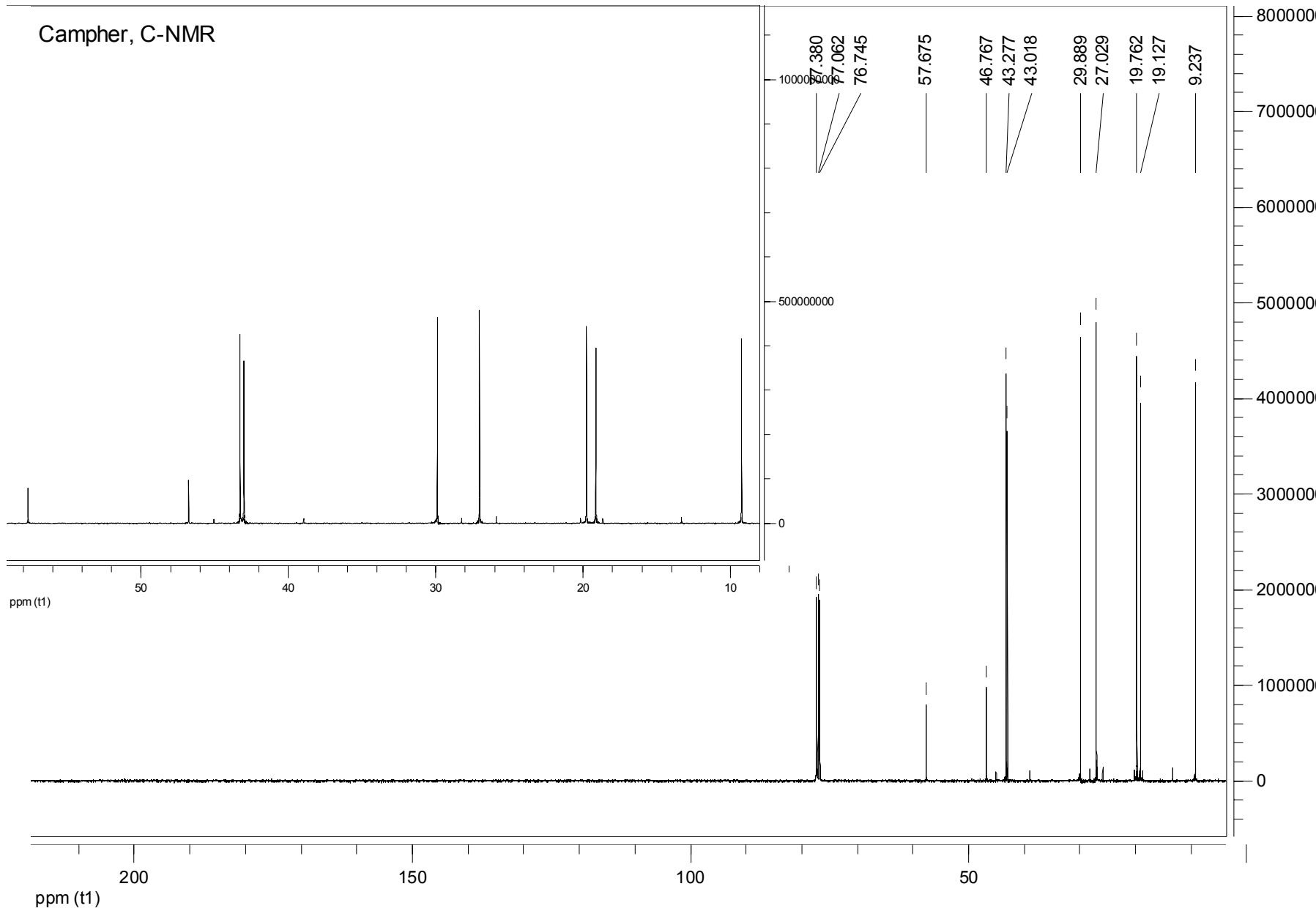


Campher in CDCl₃ (nach 14 Tagen in CH₃OD/K₂CO₃)

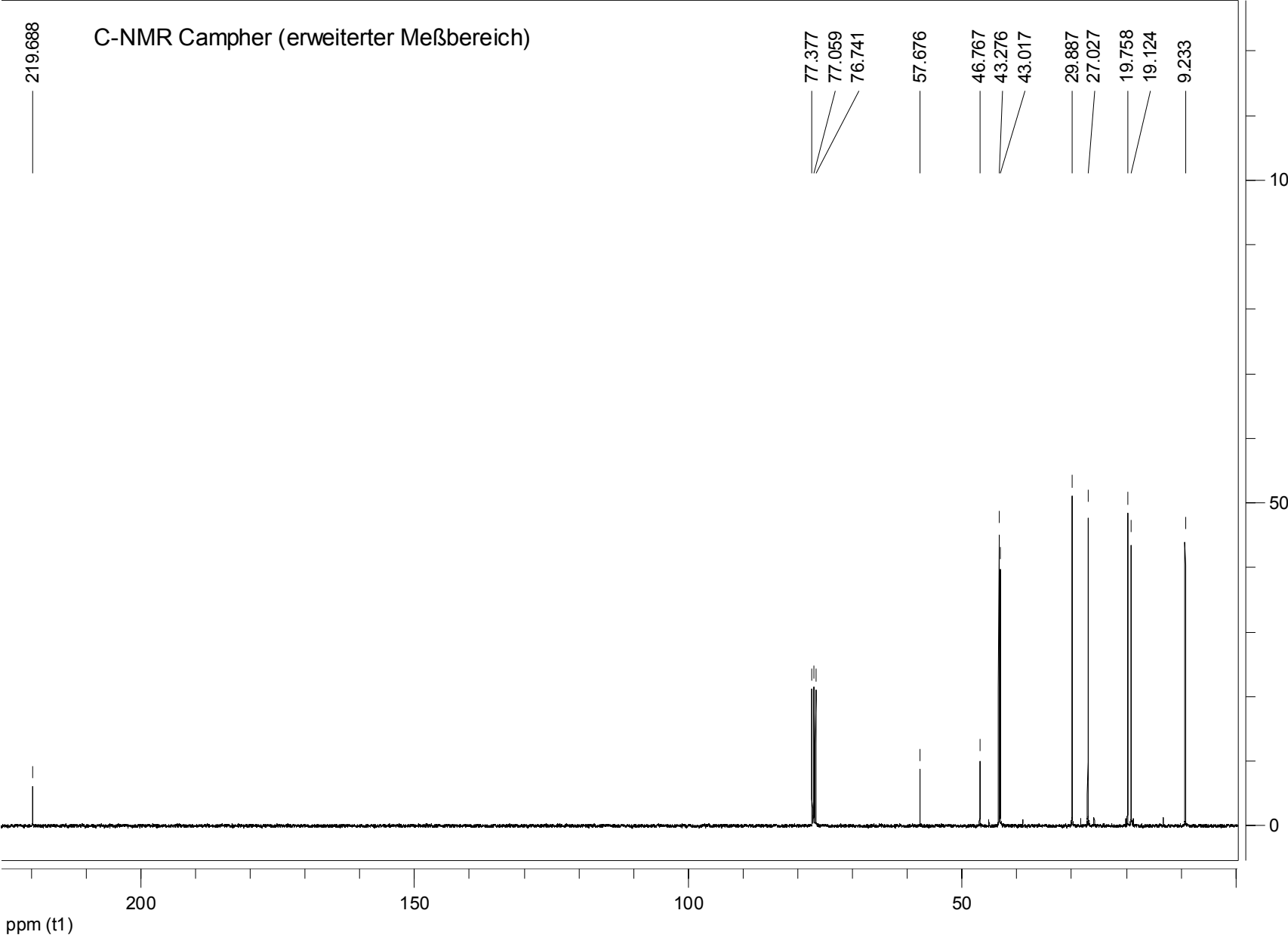




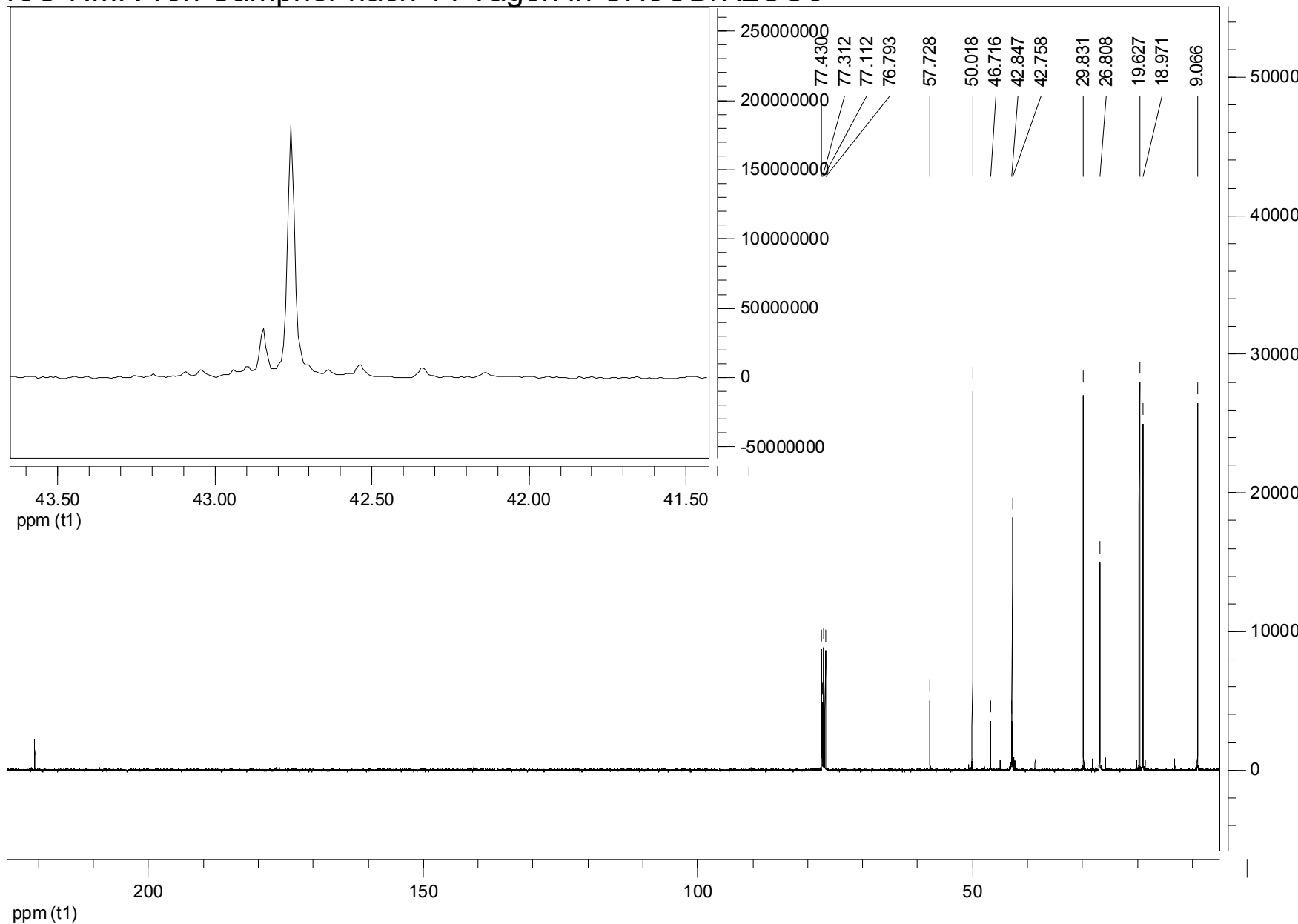
Campher, C-NMR



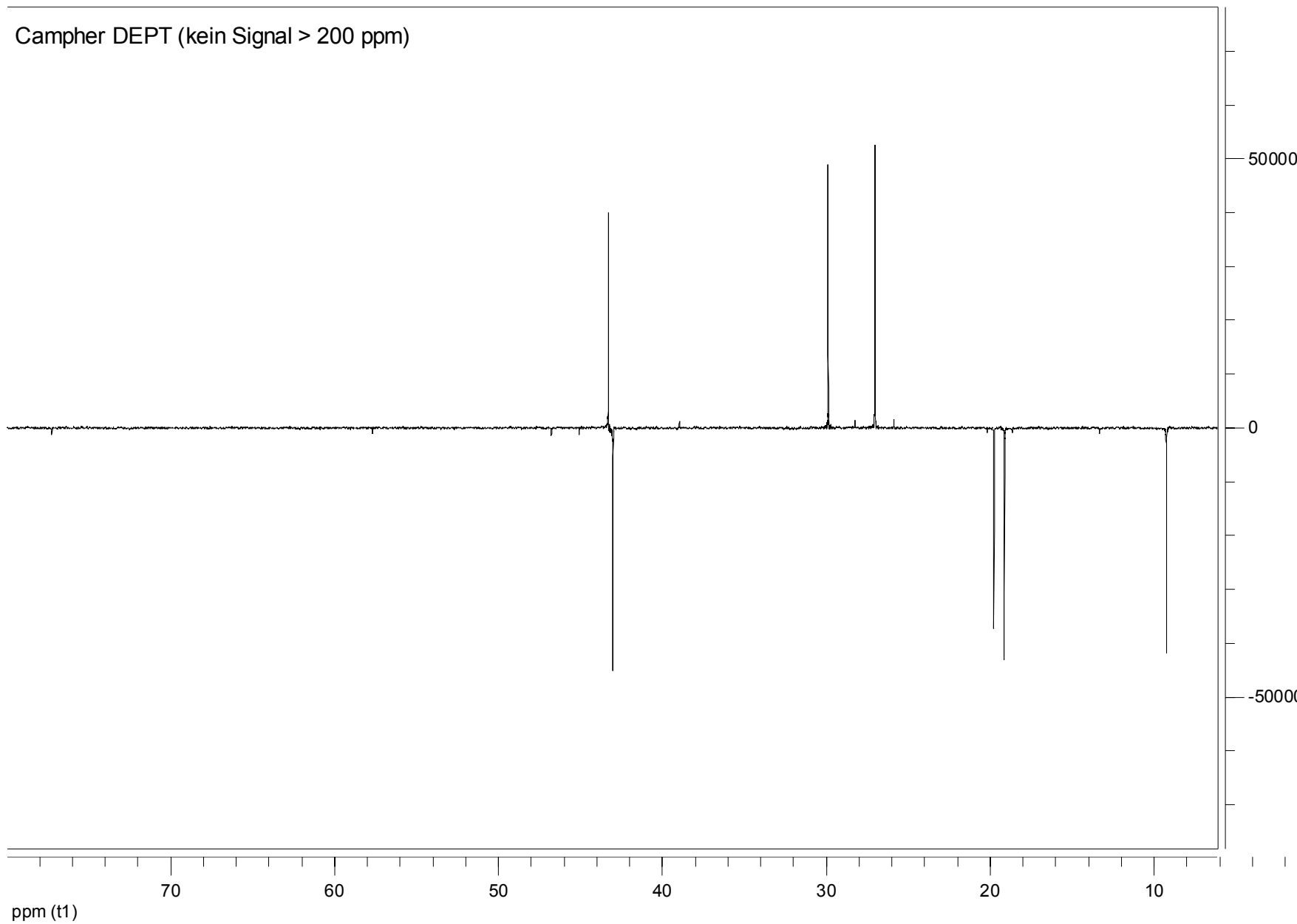
C-NMR Campher (erweiterter Meßbereich)



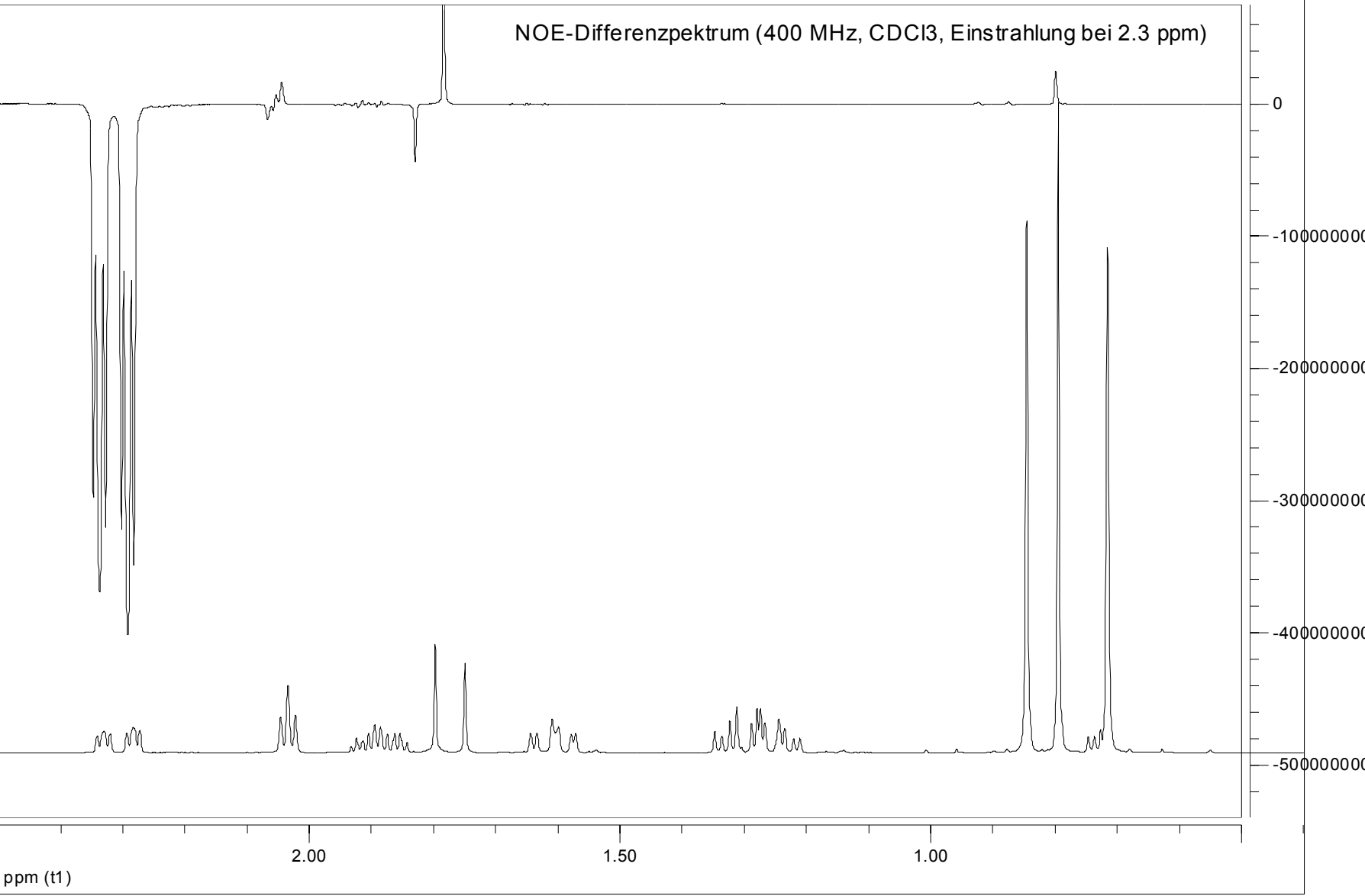
¹³C-NMR von Campher nach 14 Tagen in CH₃OD/K₂CO₃

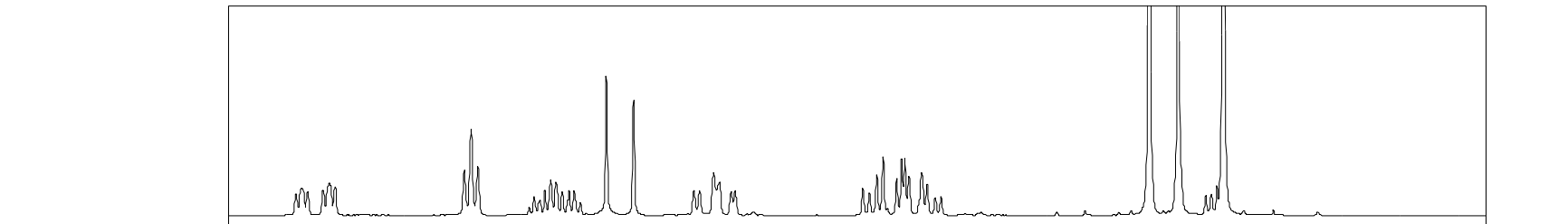


Campher DEPT (kein Signal > 200 ppm)

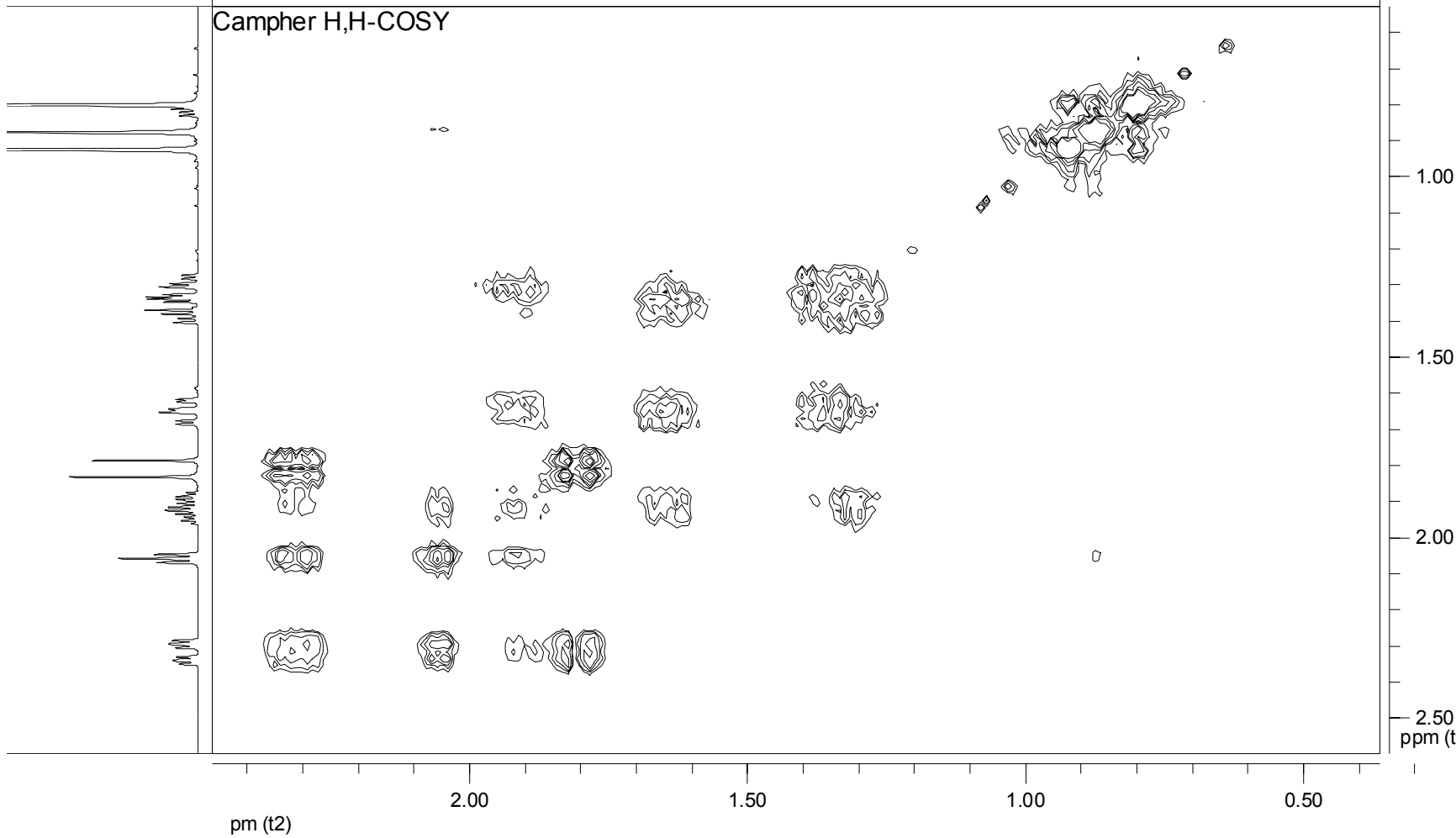


NOE-Differenzspektrum (400 MHz, CDCl3, Einstrahlung bei 2.3 ppm)

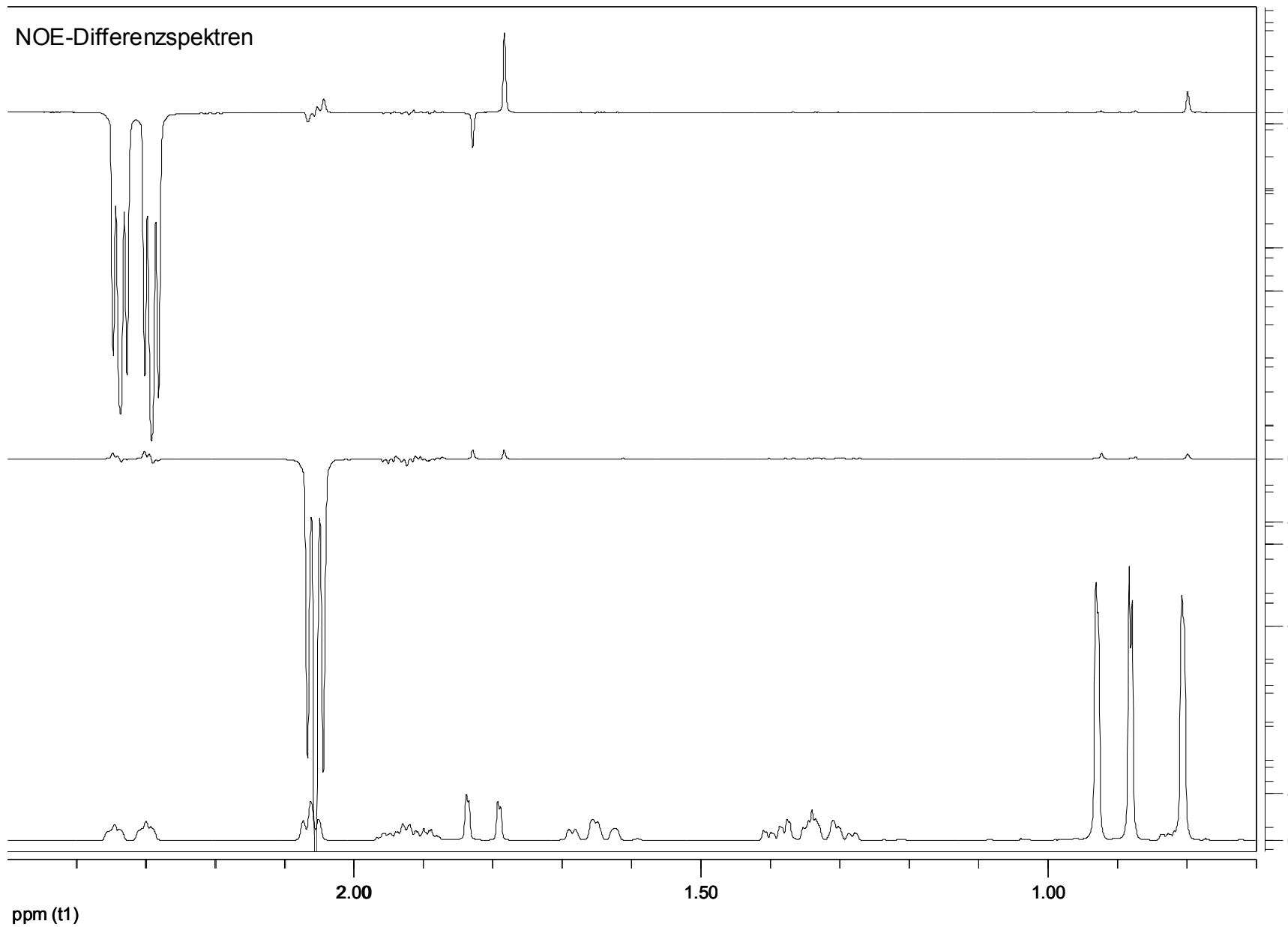


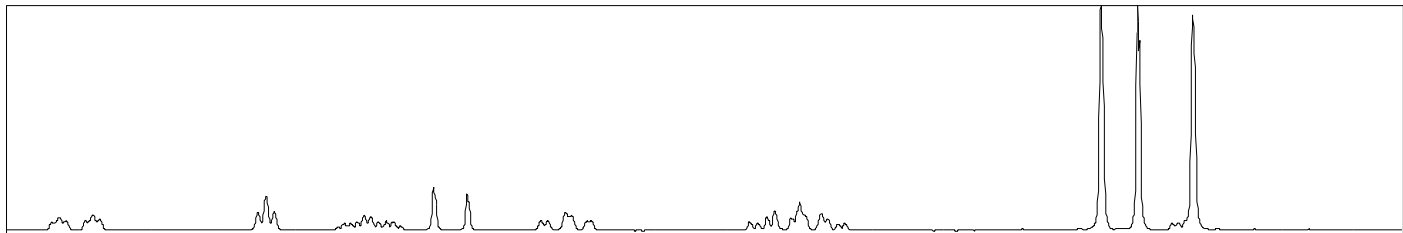


Campher H,H-COSY



NOE-Differenzspektren





TOCSY (Gesamtspektrum)

