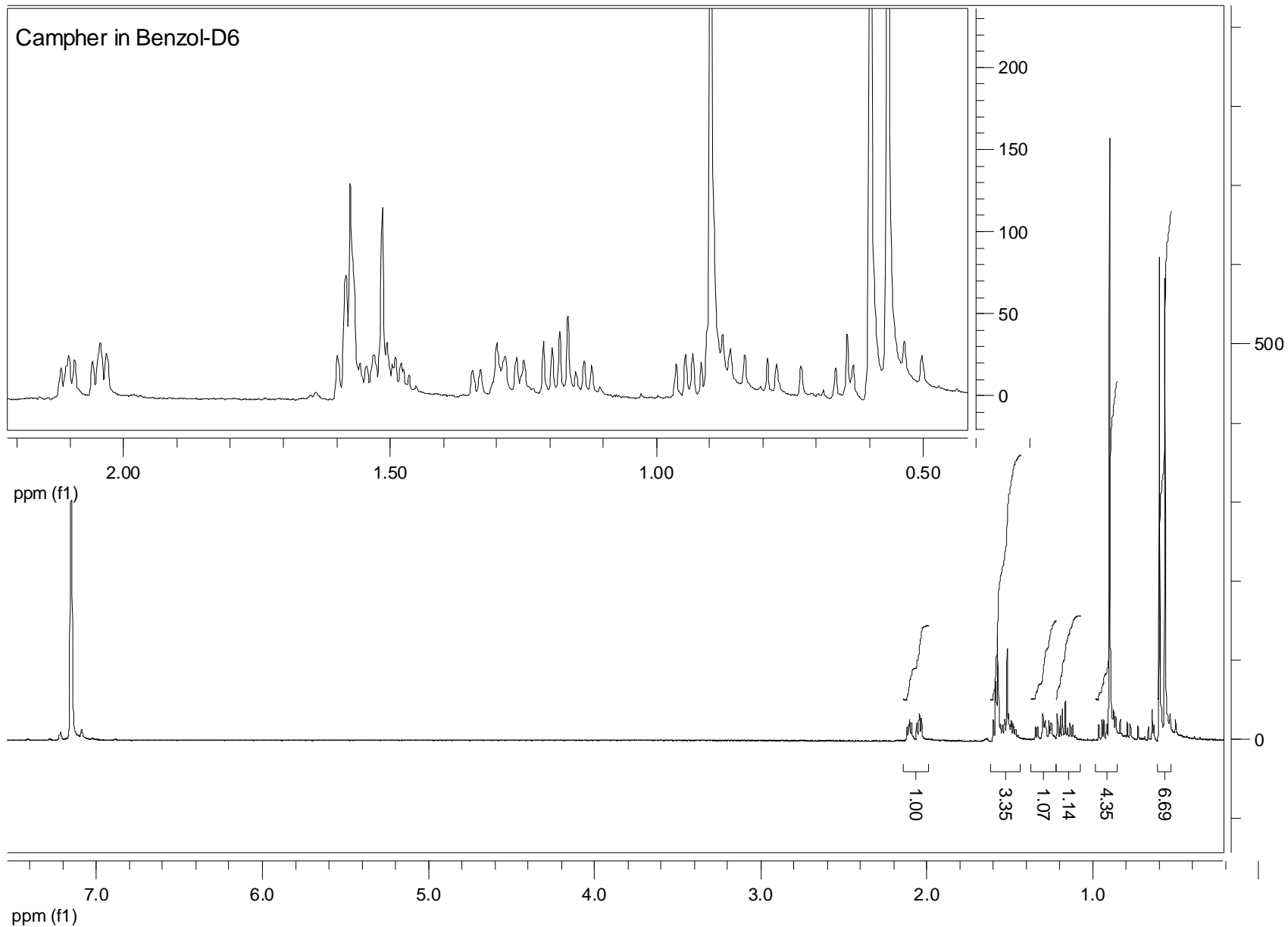
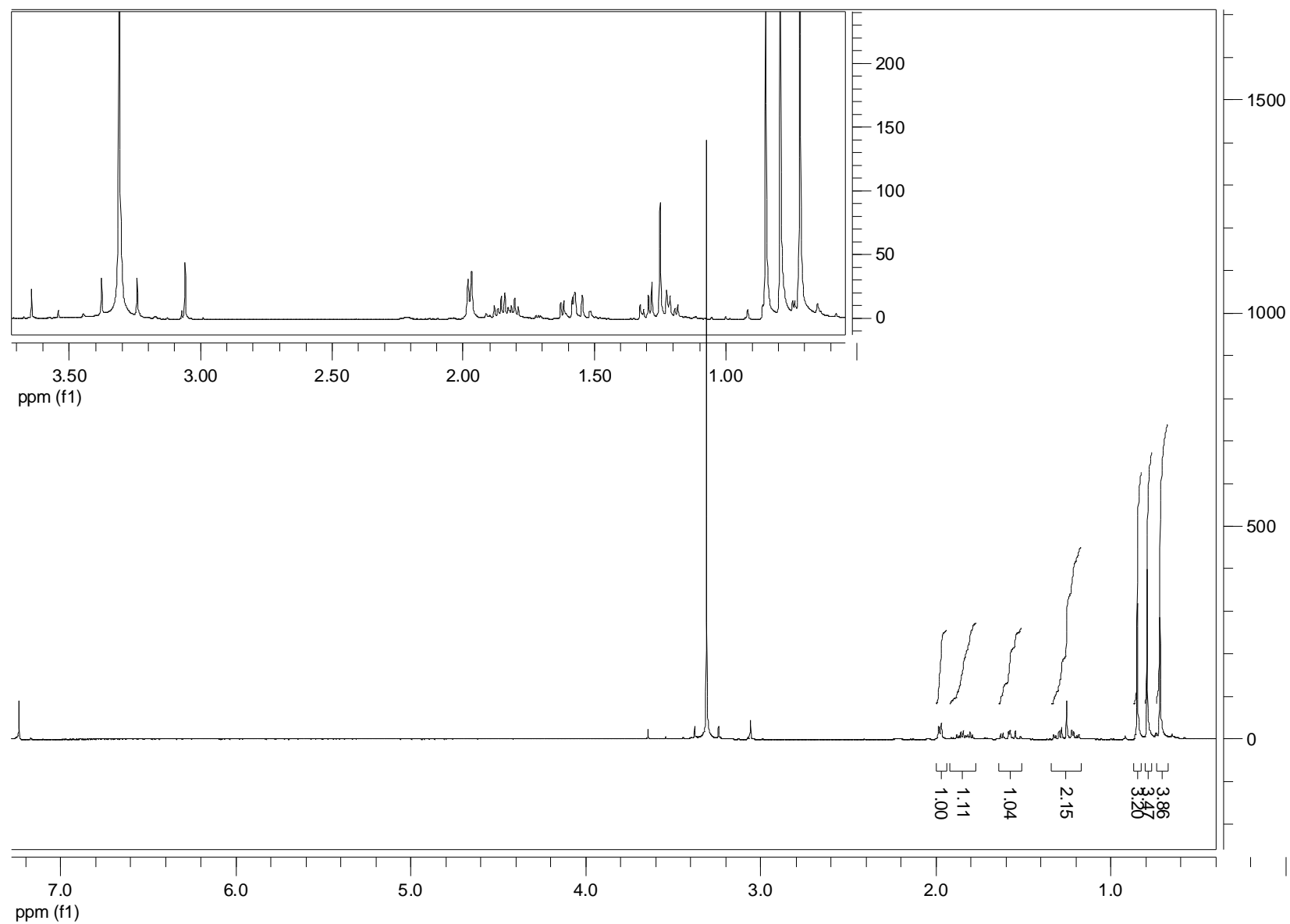
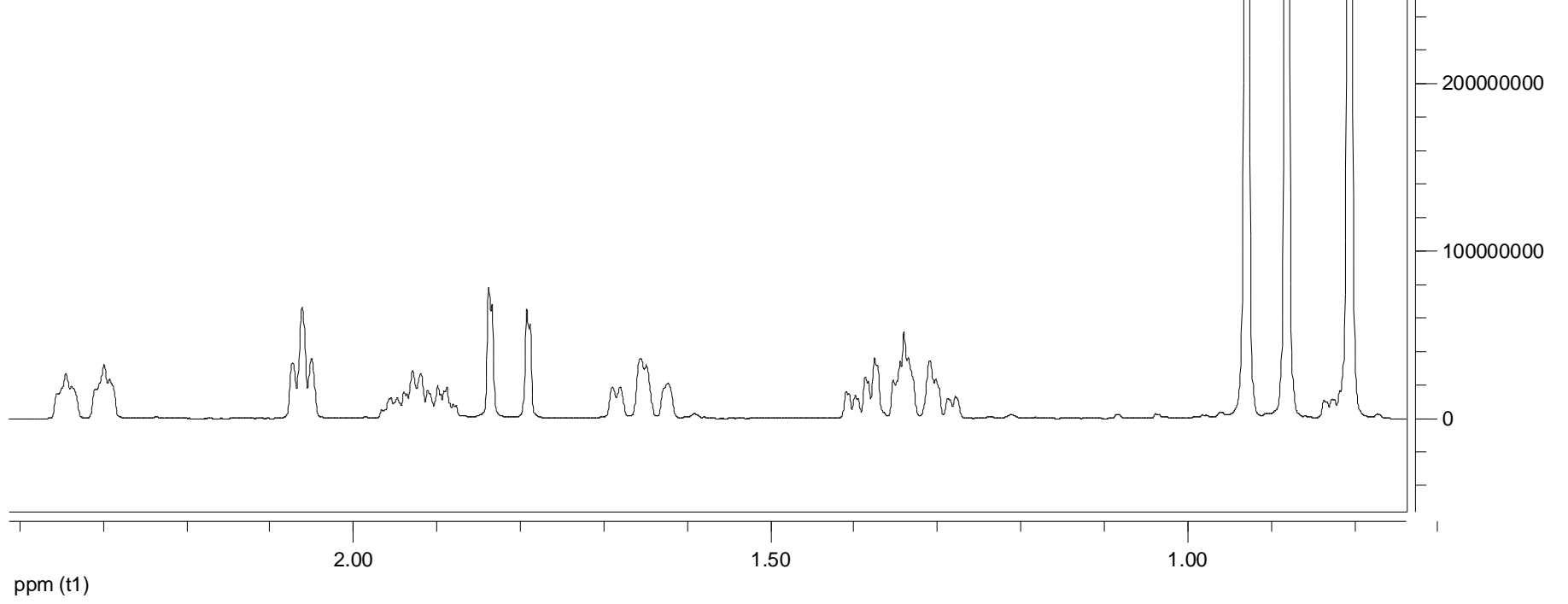
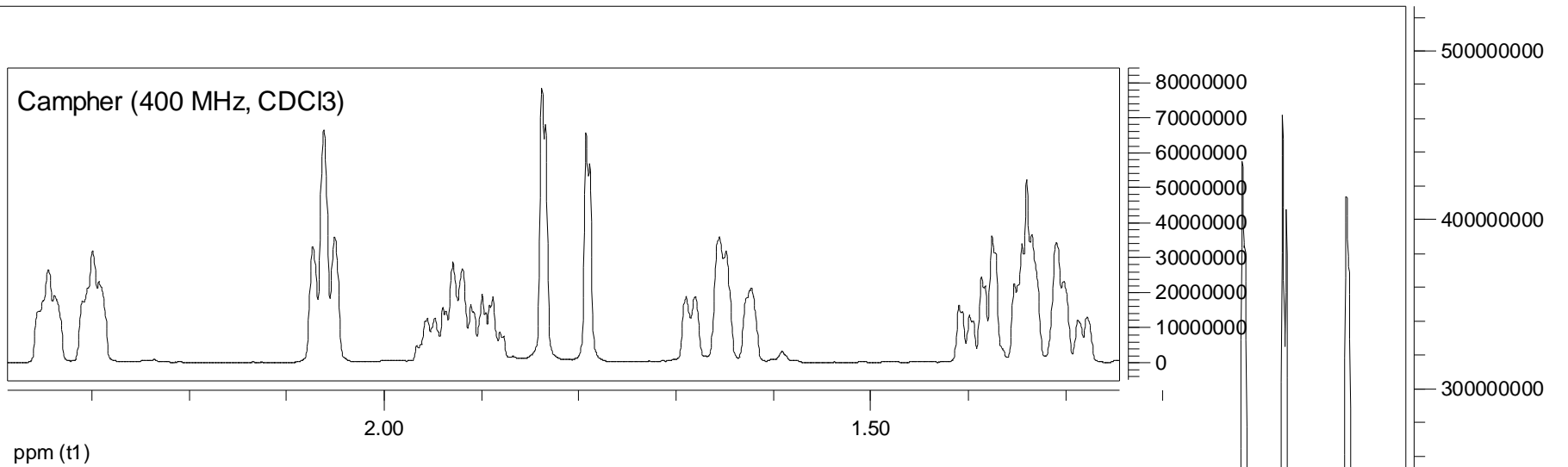


Campher in Benzol-D6

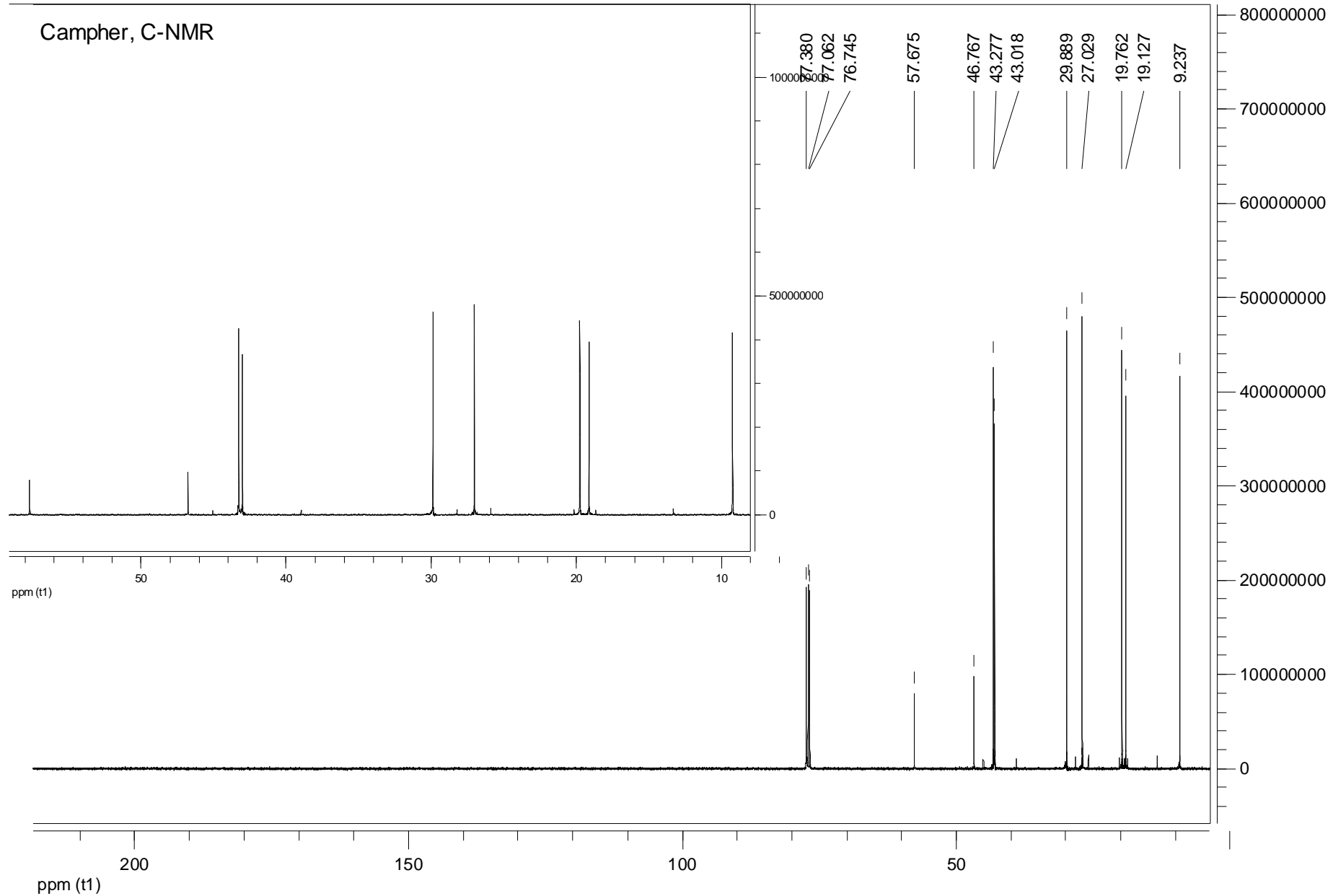


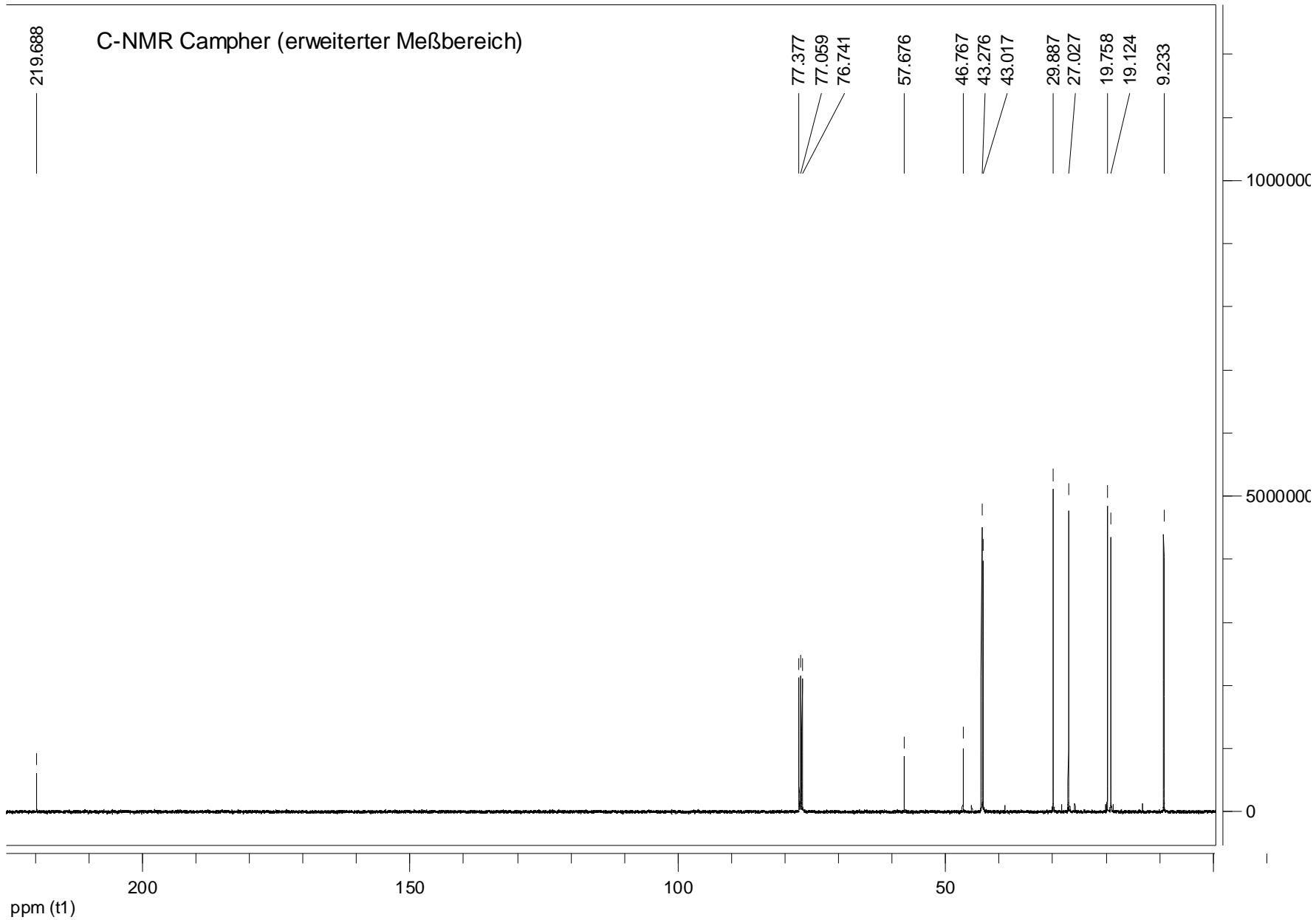
Campher in CDCl₃ (nach 14 Tagen in CH₃OD/K₂CO₃)



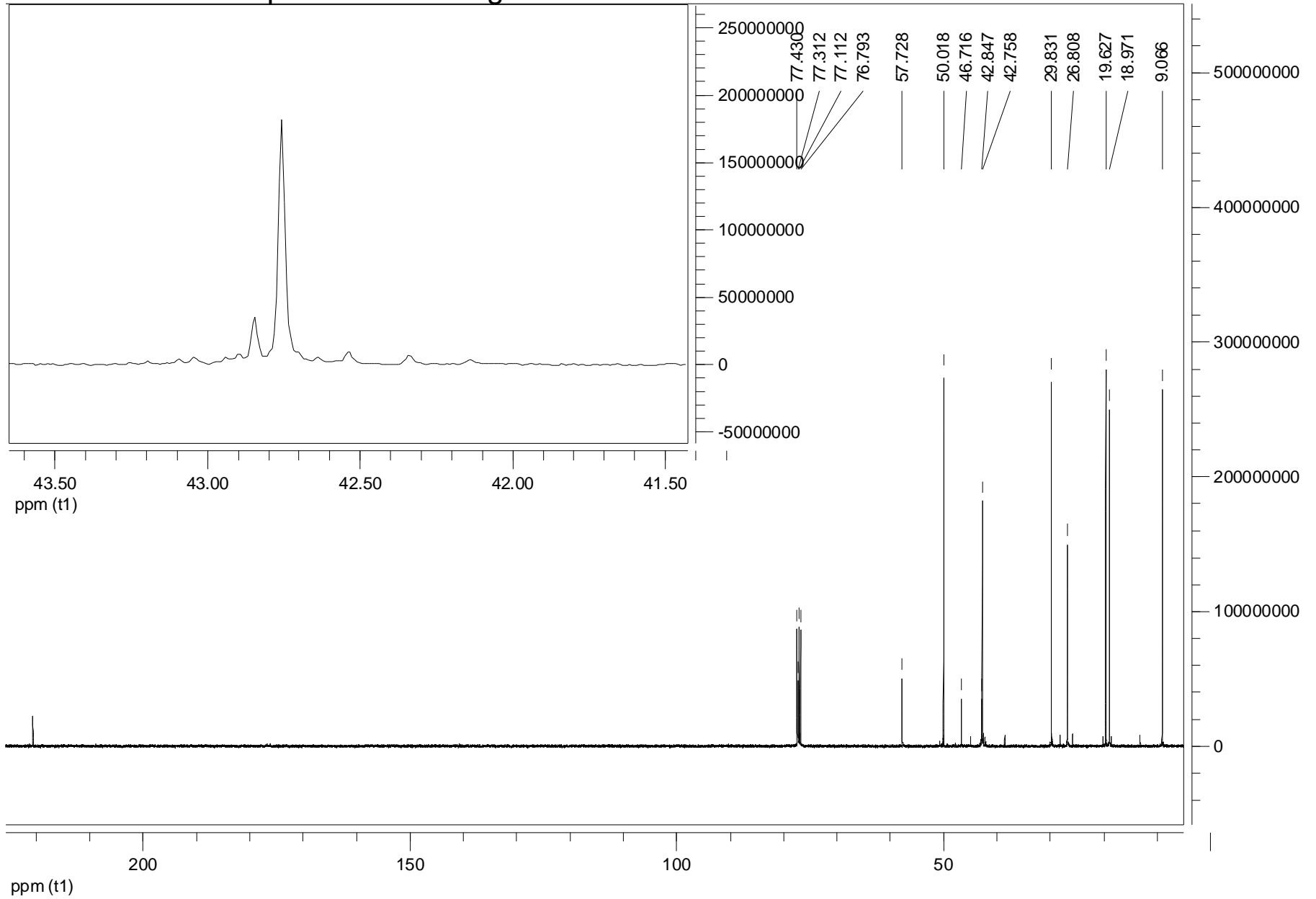


Campher, C-NMR

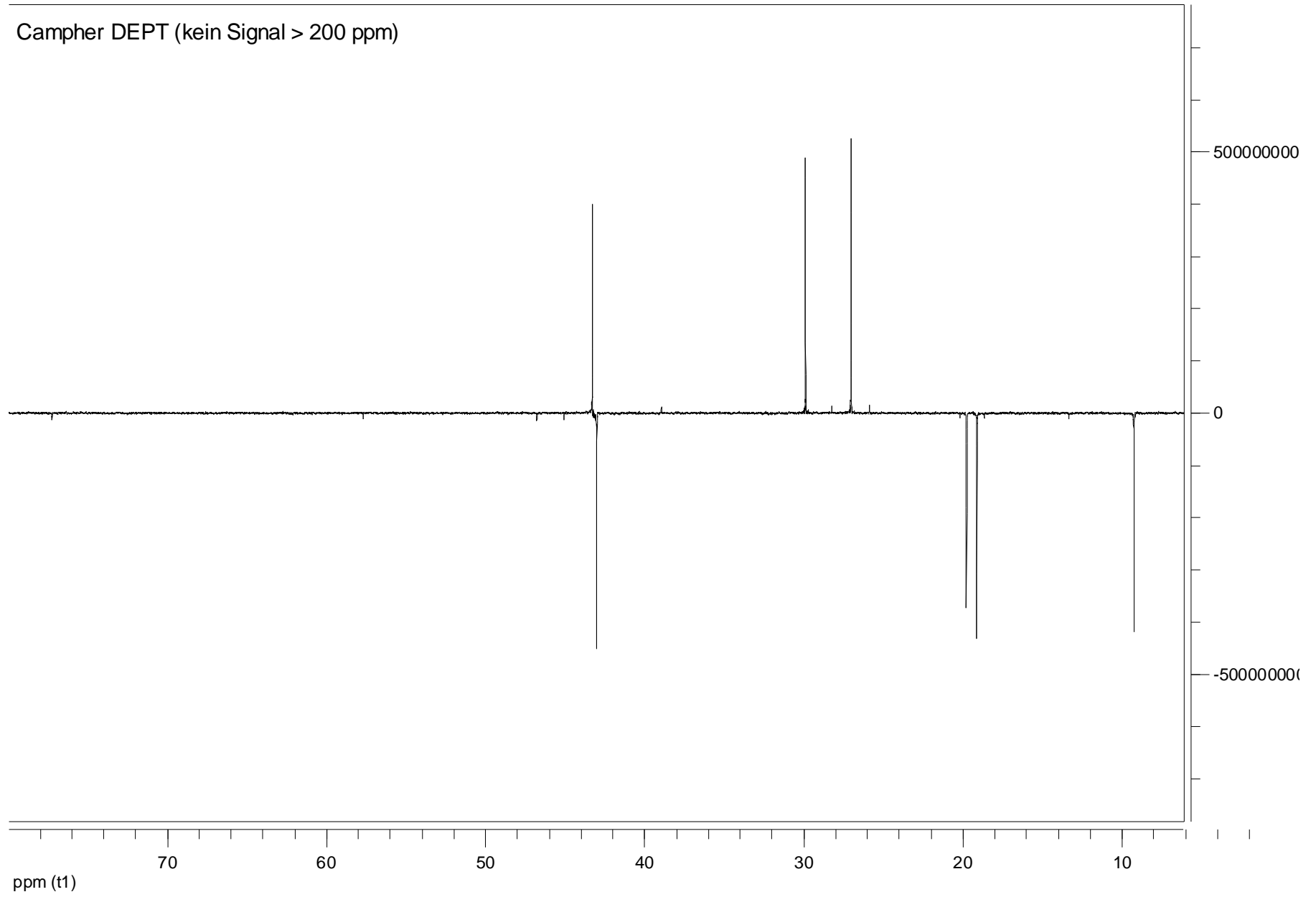




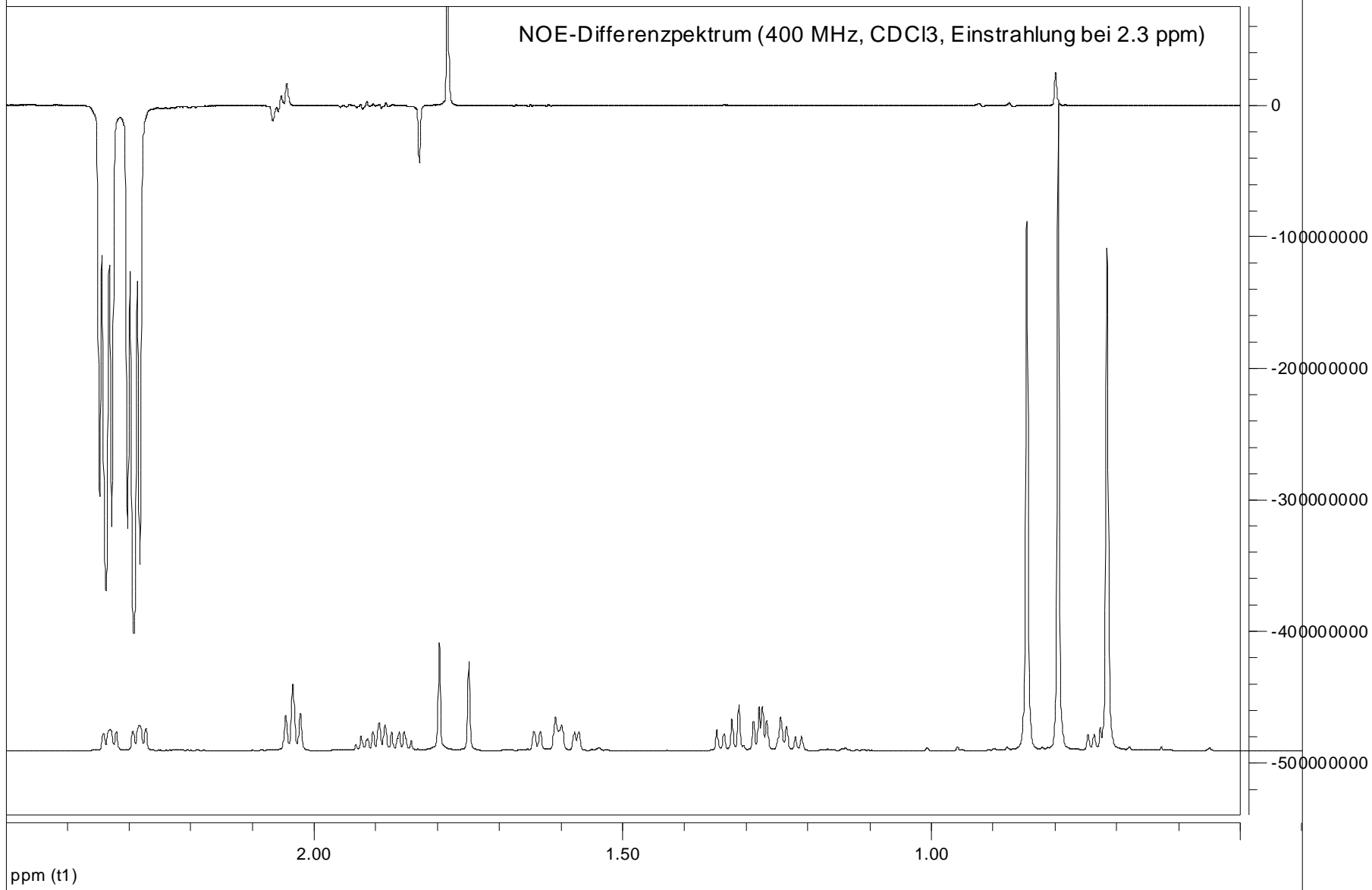
13C-NMR von Campher nach 14 Tagen in CH3OD/K2CO3

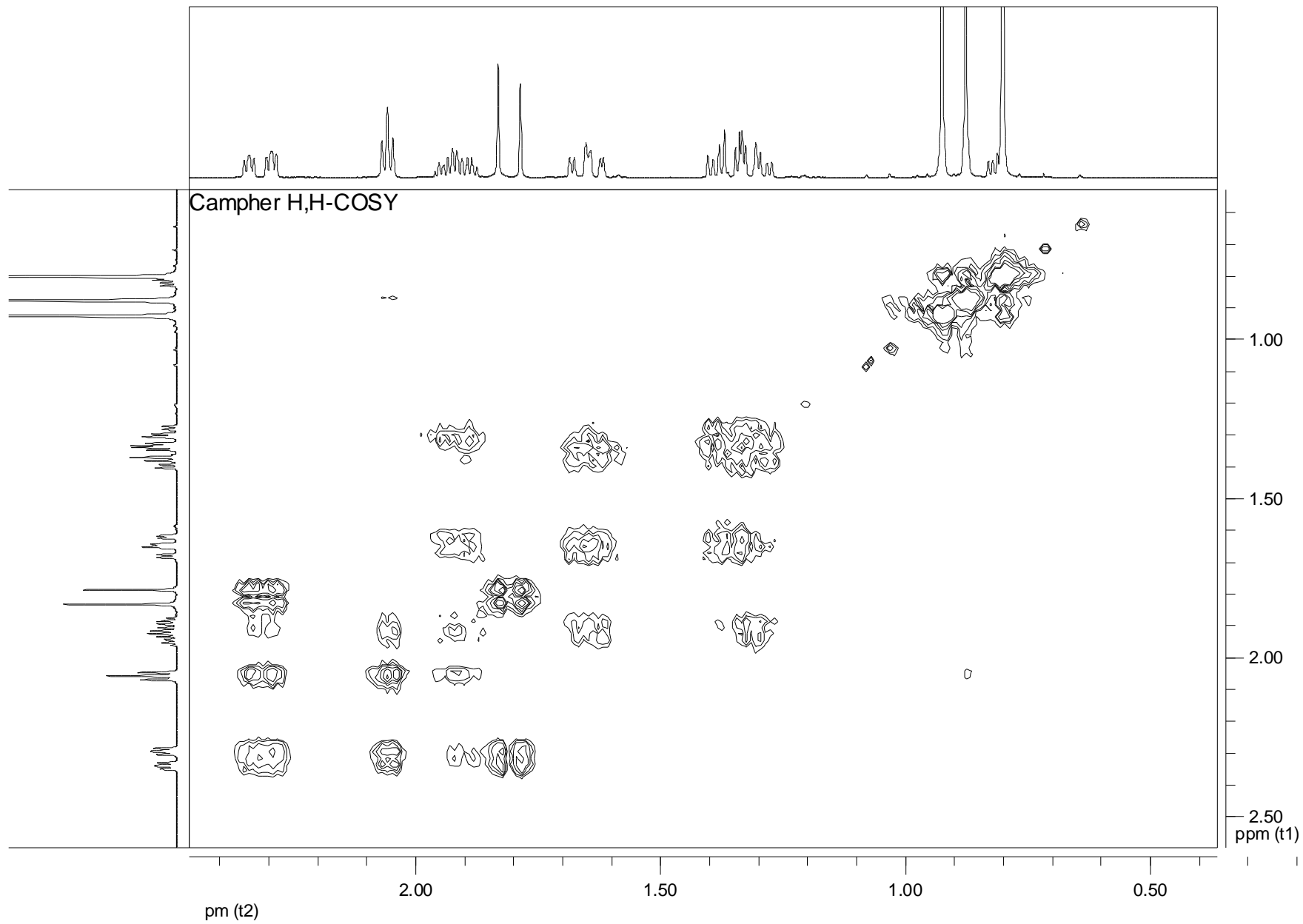


Campher DEPT (kein Signal > 200 ppm)



NOE-Differenzspektrum (400 MHz, CDCl₃, Einstrahlung bei 2.3 ppm)





NOE-Differenzspektren

