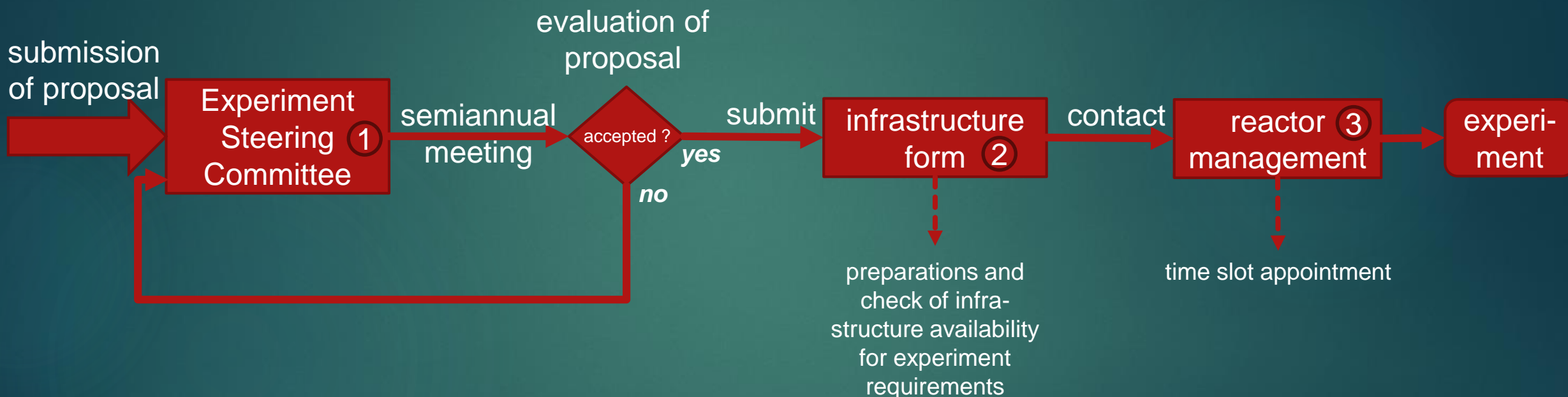


Before Coming to the TRIGA User- Facility

GUIDELINES FOR EXPERIMENT PROPOSAL AND USER ACCESS

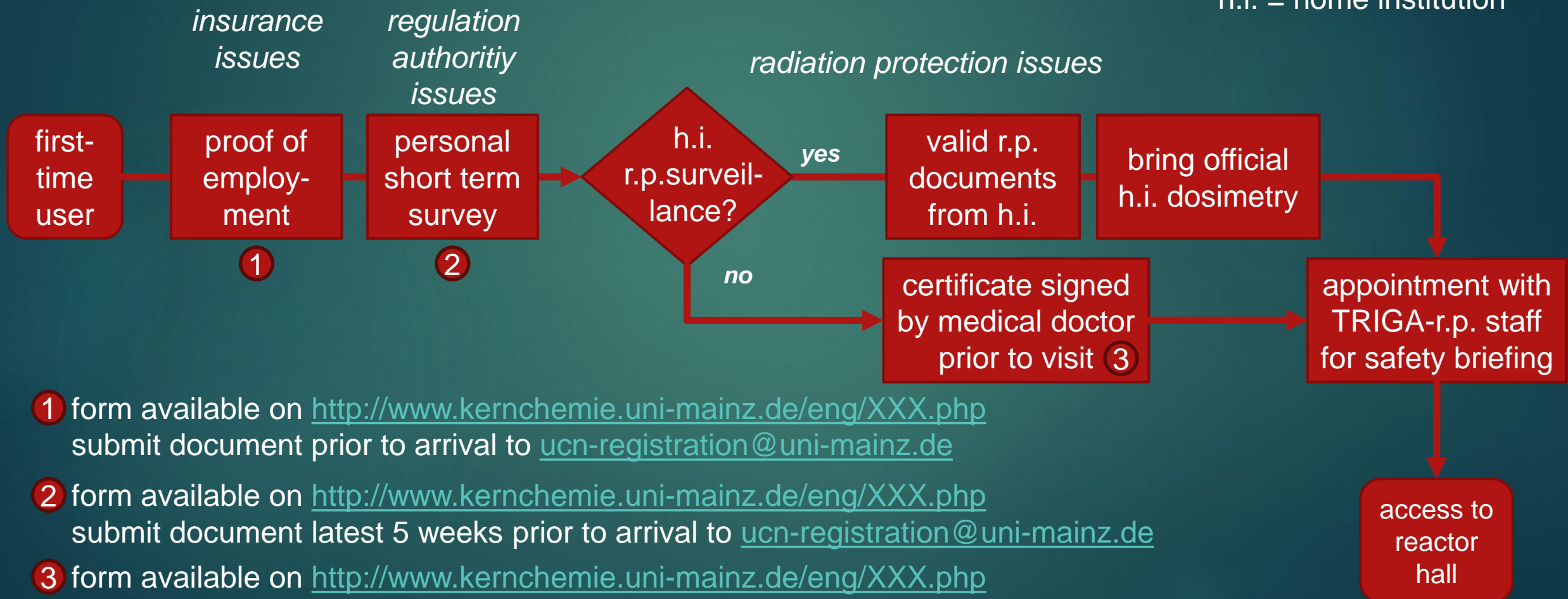
How to Initiate an Experiment



- 1 for guidelines and more information see homepage: <http://www.kernchemie.uni-mainz.de/eng/XXX.php>
submission of proposal to: wheil@uni-mainz.de and cc: cgeppert@uni-mainz.de
- 2 infrastructure form available in homepage: <http://www.kernchemie.uni-mainz.de/eng/YYY.php>
- 3 for contact see <http://www.kernchemie.uni-mainz.de/eng/XXX.php>

How to get Access to the TRIGA Reactor Hall (external first-time visitors)

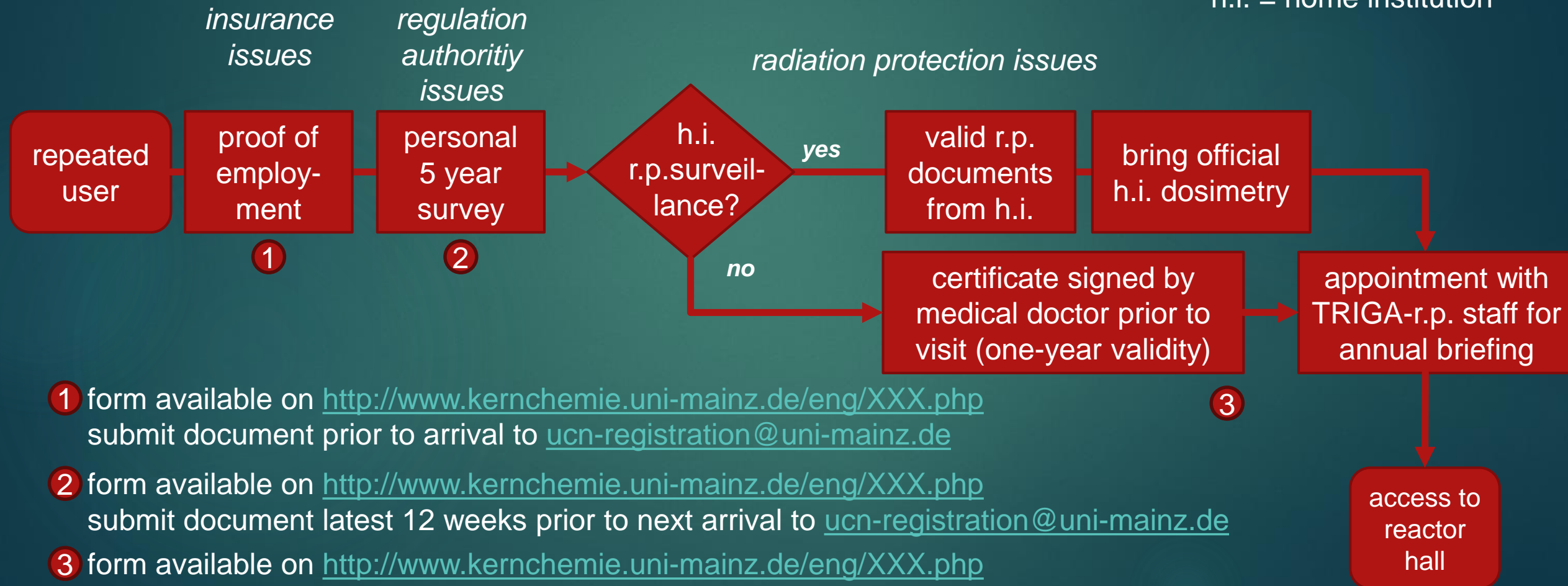
Abbreviations:
r.p. = radiation protection
h.i. = home institution



- 1 form available on <http://www.kernchemie.uni-mainz.de/eng/XXX.php>
submit document prior to arrival to ucn-registration@uni-mainz.de
- 2 form available on <http://www.kernchemie.uni-mainz.de/eng/XXX.php>
submit document latest 5 weeks prior to arrival to ucn-registration@uni-mainz.de
- 3 form available on <http://www.kernchemie.uni-mainz.de/eng/XXX.php>
submit document latest 2 weeks prior to arrival to ucn-registration@uni-mainz.de

How to get Access to the TRIGA Reactor Hall (repeated visitors)

Abbreviations:
r.p. = radiation protection
h.i. = home institution



① form available on <http://www.kernchemie.uni-mainz.de/eng/XXX.php>
submit document prior to arrival to ucn-registration@uni-mainz.de

② form available on <http://www.kernchemie.uni-mainz.de/eng/XXX.php>
submit document latest 12 weeks prior to next arrival to ucn-registration@uni-mainz.de

③ form available on <http://www.kernchemie.uni-mainz.de/eng/XXX.php>
submit document latest 2 weeks prior to arrival to ucn-registration@uni-mainz.de